



165 Ft. Crewboat - Built 1997 - ID# 1145

PRODUCT DESCRIPTION

Length Overall: 165

Beam: 30

Depth: 12

Light Draft: 5' 1"

Loaded Draft: 6' 6"

Capacities

Transferable Potable Water: 40,000 gallons

Transferable Fuel: 25,000 gallons

Engine Lube Oil: 530 gallons

Fuel discharge Rate: 90 GPM

Potable Water Discharge Rate: 600 GPM

Cargo Deck Capacity: 280 LT

Deck: 95.5 L x 24.5 W

Deck Square Footage: 2,340 sq. ft.

Categories: [Crew Boats](#)

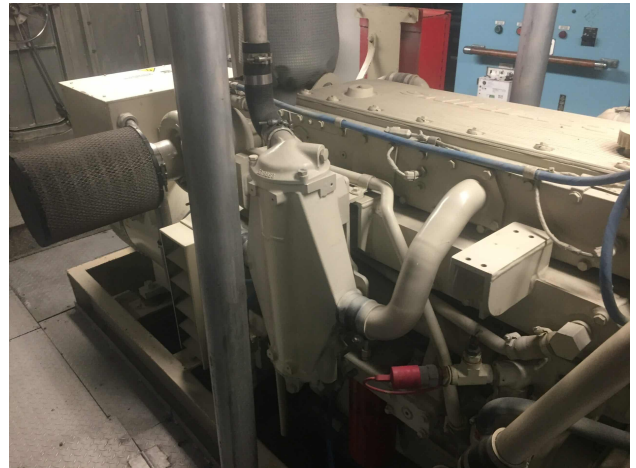
Engine Model KTA38M

HP 5400

Condition RTO

Additional Information Performance Speed: 21 knots

Fuel Consumption: 220 USG/Hr Inspections available





and Pricing upon named request.

