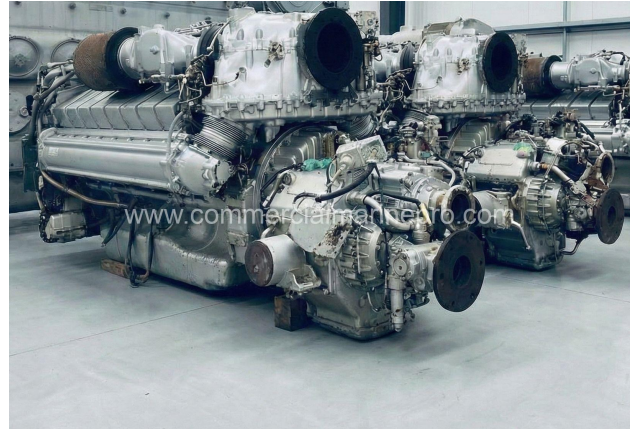




(2) MTU 16V2000 M96L Marine Engine w/ Gearbox



PRODUCT DESCRIPTION

MTU 16V2000M96L Marine Engine w/ Gearbox

Manufacturing Date: August 2020

Rated Power: 1939 kW

Rated Speed: 2450 RPM

Engine Mass (Dry): 3590 kg

Quantity Available: 2 Units

Condition: Used - Excellent

Gears: ZF 5050s

No panels, no harnesses.

Located overseas



Categories: [Marine Engines](#)

Engine Manufacturer/Brand MTU

Engine Model 16V200096L

RPM 2450

Generator Manufacturer/Brand Caterpillar

kW Rating 296

