



231 ft Platform Supply Vessel - Built 1985 - ID 1499

PRODUCT DESCRIPTION

Built 1985 / Rebuilt 2006 / Rebuilt 2018

Class - ABS +A1, (E), +AMS

Dynamic Positioning - DP1

Dimensions:

Length - 231'

Beam - 40'

Depth - 14'

Light Draft - 5.6'

Loaded Draft - 11.2'

Capacities:

Clear Deck - 158' x 28'

Deck Cargo - 700LT

Drill Ballast Water - 88,482 USG

Potable Water - 10,250 USG

Fuel - 113,000 USG

Bulk Tanks - (4) 6,000 Ft³

Liquid Mud - 3,745 BBL

Engine Lube Oil - 1,918 USG

Walk In Cooler - 247 ft³

Accommodations:

Cabin / Berths - 7 cabins

Officer's Cabins - (2) 1 Man, (3) 2 man

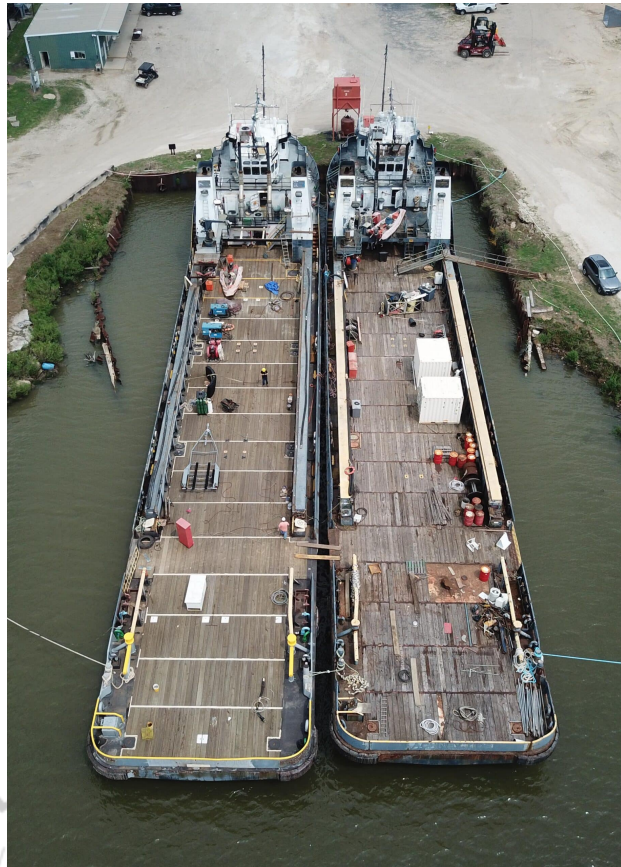
Crew Cabins - (2) 4 man

Passengers - 6 PAX

Lounge Seating - 7 Persons

Mess Seating - 7 Persons

Vessel Mooring:





Anchors - (2) 2,000 lbs Danforth
Chain (per side) - 630 ft. x 1.125 inch
Windlass - McElroy MDW 125-LBE

Machinery:
CAT 3512B
Z- Drives - Yes
Bow Thruster - (1) Ulstein 90 TV CP 650 HP

Categories: [Supply Boats](#)

Engine Manufacturer/Brand CAT

Engine Model 3512B

HP 1500

kW Rating 99

Condition RTO

Additional Information The vessels are cold stacked, but are checked daily and generators are cycled weekly. Will need some work in shipyard. St. Vincent and the Grenadines flagged with ABS for Hull and Machinery. So the buyer can drop class and stick with just a Flag Administration and comply with USCG requirements to come in and out of the US without great difficulty.

