



3.5- Ton Knuckleboom (pedestal mounted)

PRODUCT DESCRIPTION

Ship that it was a part of was decommissioned and scrapped, so cranes were removed in that process. Already removed.

Make an offer

Main boom 20'

Knuckle 16'

Inside boom 12'

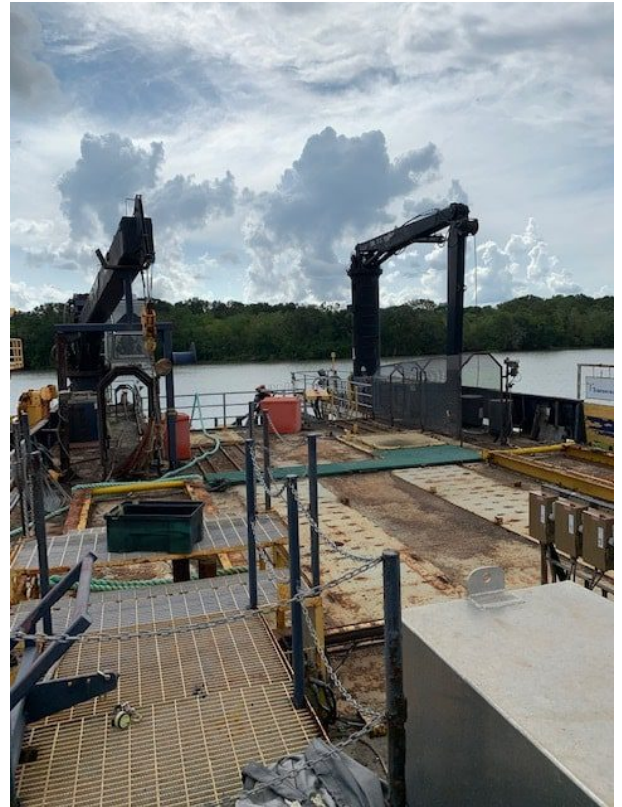
Pedestal to deck to top of turntable 20'

Operator control to bottom weld on deck 9' 6"

Diameter of pedestal 41' Power pack 5x5x5 50ft reach per manufacturer

Categories: [Cranes](#)

Additional Information Alaska Marine Crane Model - MCK 1250 Good used crane Knuckleboom Original manufacturer was purchased by North Pacifix Crane. Latest time it was certified was in 2015. Serial number is not known.



COMMERCIAL
— MARINE PRO —

