



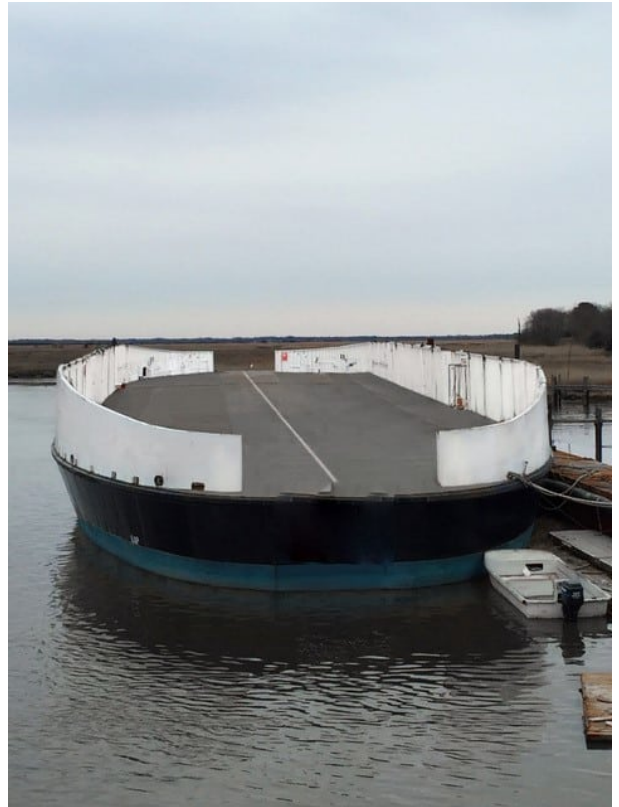
---

## 320' Deck Barge w/ Bin Walls

---

### PRODUCT DESCRIPTION

Built 1985. Dead Weight--2177 Long Tons @ 11.06  
Freeboard Carrying Capacity--3000 short Tons  
w/approx 3ft freeboard (for every additional 40tons  
reduce 1") Thickness of Deck--1/2" Thickness of Hull--  
7/16" centerline to 15ft, 1/2" 15ft to deck No Ballast  
Tanks No Ocean Going Certs Length--320ft Beam--66ft  
depth--16ft Bow thruster



**Categories:** [Barges](#)

**Condition** RTO

**Additional Information** calculations are based on our professional consultants, and we recommend that you consult a Naval Architect to confirm exact calculations. We have a Naval Architect that was involved during construction that we could recommend if you so choose. According to owner:

- Naval artwork - a little over 3000tons due to the design maybe 3500tons max with a little freeboard on it
- Deck calculations - 800lb sq ft. Normally but sand or aggregate spread out is ok
- Almost full steel thickness around on bottom
- Coated on all insides
- Has cat bow thruster if someone hooked it up.
- Tows fast like 16knots with right boat
- Has rudders and wheels too - could cut off.

