



680HP Pushboat

PRODUCT DESCRIPTION

1954

L: 42'

Beam: 14.3'

Draft: 4-5'

Gross tonnage: 27

Fuel capacity: 1,500 (approximately)

Current COI. Hauled about 6 years ago. hull structure done, then went over it from end to end.

40x40 square blade 4 blade props

3 in shafts

Twin 871s - hours not known

Kubota Generator - hours not known

Flanking rudders

Galley

Electric winches

Categories: [Pushboats](#)

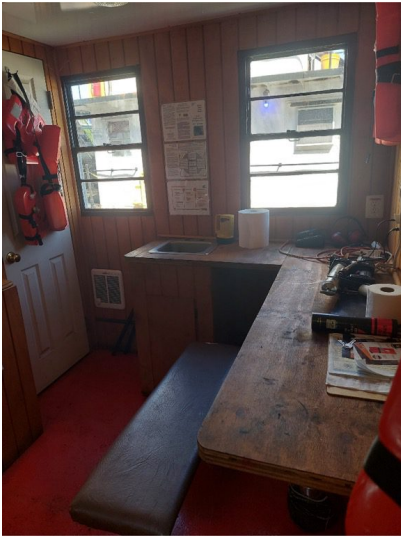
Total Vessel HP 680

Vessel Beam in Feet 14.3





AT&T 2:55 PM 16 of 16



Share icon and menu icon