



CAT 3304 Generator Industrial

PRODUCT DESCRIPTION

under 200 original hours

125KW

60Hz

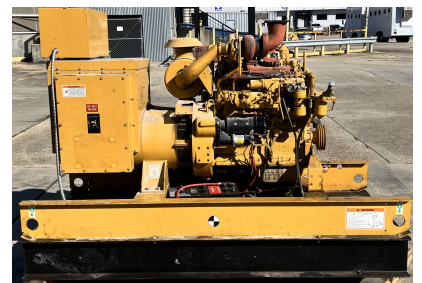
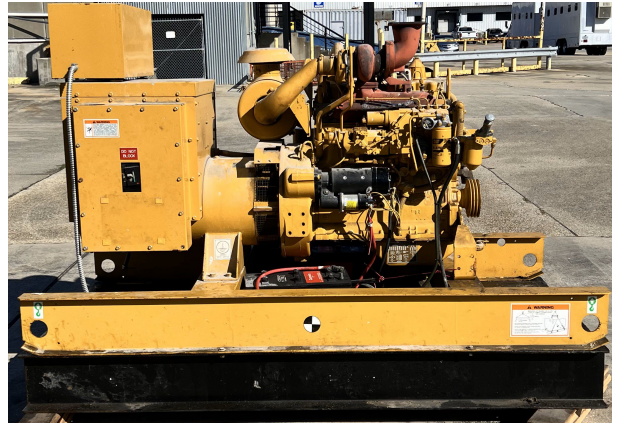
Generator was used by a hospital. Pulled Fall of 2022. Generator was ran prior to removal, but has not been ran since.

Generator was set up with a remote radiator at the hospital, it does not come with a radiator now, and is the reason it was not ran since.

Categories: [Auxiliary Engines](#)

Generator Manufacturer/Brand Caterpillar

Generator Model 3304





CATERPILLAR®
GENERATOR SET

ENGINE MODEL 3304

RATING

150 KVA 125 KW 0.8 COS ϕ 60 HERTZ

☐ PRIME ☒ STANDBY

GENERATOR DATA

3 PHASE ☒ 12 WIRE ☐ 4 WIRE

CONNECTION ☒ WYE ☐ DELTA

GENERATOR ☒ SERIES ☐ PARALLEL

EXCITATION 55 VOLTS 100 AMP

300 FRANK 1000 REVERNA

MAXIMUM TEMPERATURE RISE 150 °C BY RESISTANCE

☐ °C AMBIENT ☐ METERS ALTITUDE

ENCLOSURE TYPE ☐ CLASS II INSULATION

YEAR 2008

INCLUDE SERIAL NUMBER AND GENERATOR PART NUMBER FROM
GENERATOR SERIAL NUMBER PLATE TO BE SHOWN FIRST AND IN
CORRESPONDENCE
GENERATOR FRAME SHOULD BE SHOWN

K40021 August 2001 179-B001.1