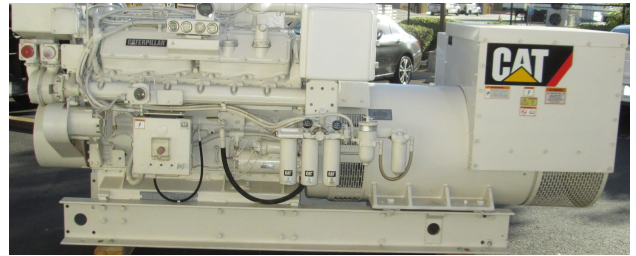




---

# Single or Pair CAT 3412C DITA Marine Generator 590kW Prime - New Surplus

---



---

## PRODUCT DESCRIPTION

440 Volt 3 Phase 60HZ @1800RPM

Arranged for Heat Exchanger Cooling with Aux sea water pump installed

Woodward PSG Governor

Engine 4 hole guauge panel with tachometer

24V Electric start Charging Alternator

Electric Shut offs

440 VOLT • 3 PHASE • 60 HZ • 1800 RPM

One is 2010 the other is 2011

4 hours on the meter which is the factory dyno testing.  
They have been preserved since.

IMO Compliant

Will be serviced and load tested as part of purchase.

Cannot be used in the United States

**Categories:** [Marine Generators](#)

**Cooling Method** Heat Exchanger

**Engine Manufacturer/Brand** CAT

**Engine Model** 3412

**Generator Manufacturer/Brand** Caterpillar

**Generator Model** 3412C DITA





**kW Rating** 590

**Voltage** 440 volt

**Condition** Surplus

---

