



---

# Luxury Accommodation Barge

---

## PRODUCT DESCRIPTION

Price has been slashed to \$3,800,000 USD 370' x 85' 55' 14 large staterooms with full granite bathrooms and double queen beds. 4 larger VIP staterooms with balcony access. 1 "President's Suite" of close to 1,500 sq feet of living space. 1 Captain's suite feature two rooms. 5 upper deck crew rooms 13 lower deck crew rooms. 1 complete restaurant quality kitchen (galley). Salon of 2,500 sq feet Full Bar. Wine Room. Movie Theater. Multi-level Gymnasium with free weights, machines, and aerobic equipment, sauna and massage Rooms, including spa/pedicure chairs. Business Center. Satellite TV, Phone and Internet. Crew Galley. Crew Lounge. Italian tile and custom woodwork throughout. (3) CAT 180KW diesel generators for electricity. (1) CAT emergency generator. (2) Reverse Osmosis Village Marine PW4000 water makers capable of 360 gallons per hour. (1) large walk-in freezer (20'x20'), (1) large walk-in refrigerator (20'x20'), (3) large AC machines. Fire System - ship wide Diesel fuel capacity of 320,000 gallons or 1 year (with a fuel burn rate of 100 x 500 gallons per day depending on use). 30,000 lb anchor and 12,000 lbs of chain for a single mooring system. Non-powered

**Categories:** [Barges](#)

**Condition** RTO

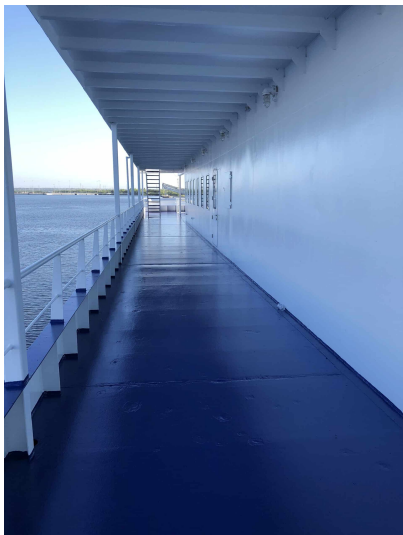
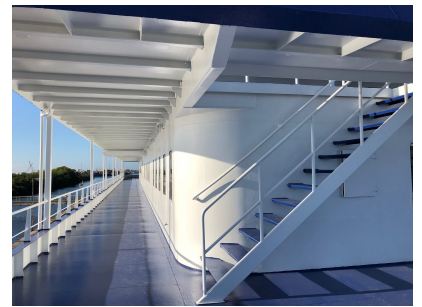
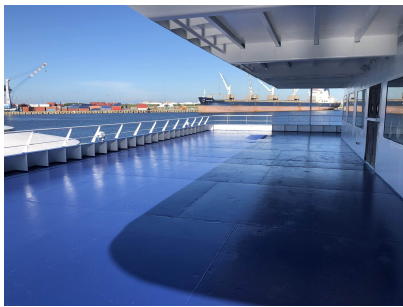
**Additional Information** 70' swimming pool with swim-up outdoor bar. Reception center. Infirmary. Laundry facility featuring Huebsch professional equipment. Dive center featuring a NiTrox refill station. Salt-water ice maker and exterior walk-in freezer. Over 12,000 sq feet of unused interior space at the crew level that can accommodate 100+ beds for medical use Over 6,500 sq feet of unused interior space on the top





deck that can be made into additional rooms or perfect for offices and cubicles. Marina that can accommodate boats up to 20' wide. Storage for up to (4) 28'-37' boats on the aft deck of the ship. Helicopter pad (11,300 sq ft) that accommodate up to 11,000 lbs of weight, the equivalent of a large Sikorsky S76. Complete GMDSS electronics and radio package

---

 **COMMERCIAL**  
— MARINE PRO —