



2430HP Model Bow Tug

PRODUCT DESCRIPTION

LOA: 97'6"

Beam: 32'

Depth: 16'

GRT: 198

NRT: 135

Upper Pilot House: 33'6" Eye level

USCG: Sub Chapter M Compliant with COI issued July 2022

Main Engine: ALCO 12V-251E

Gears: Reinjes WAV-2650 4.94:1 Ratio

Horsepower: 2430 HP

Propellers: 4-Blade 111" x 111" Prop with Type Kort
Nozzle & Flanking Rudders

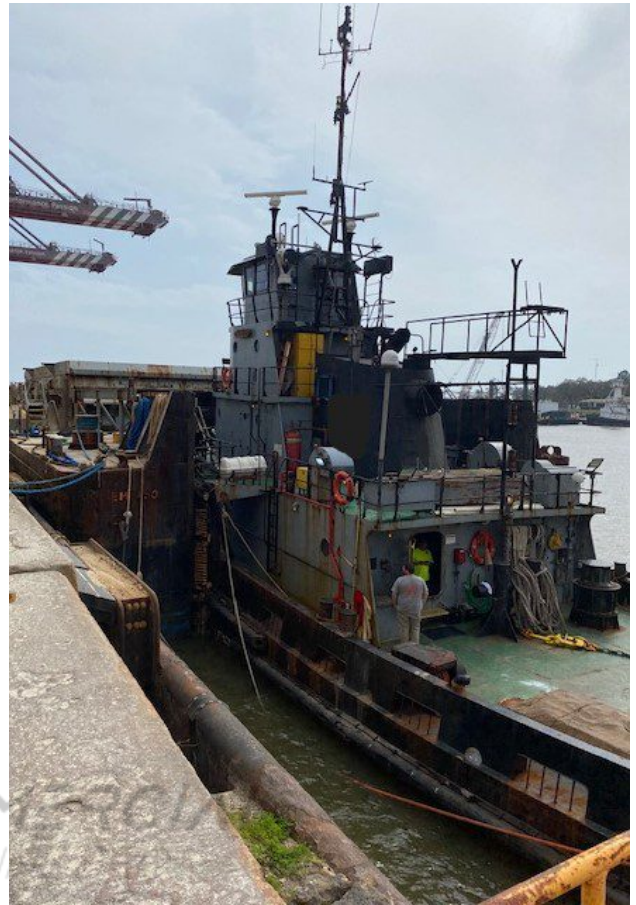
(2) Detroit 671 with Marathon Generators (240V & 130KW)

Diesel: 43,500 Gallons Lube Oil: 575 Gallons

Potable Water: 2,450 Gallons Wash Water: 5,750 Gallons

Gyro compass w/Auto Pilot, 2 Furuno Radars, AIS, 4
VHFs, GPS, Cellular phone, Satellite phone w/email,
Weather Fax, Navtex, Magnetic Compass,

Categories: [Tugboats](#)





Vessel	
Length (LBS)	87' 0"
Length Overall	108' 0"
Beam	22' 0"
Depth	10' 0"
Load Line Draft	13' 0" RL
Lightship Wt	100.9 L tons
Load Line Stage	100 L tons
Decking / Cap	
Built By	Jackson Shipyard Hall
Vinc Complied	1988
Crane Tonnage	100 CRF
	120 CRF DIC
Net Tonnage	100 NET
	100 NET DIC
Fuel (gals @ 95%)	42,500
Lube Oil (gals)	575
Hyd Oil (gals)	
Fresh Water (gals)	2,400
Wash Water (gals)	5,700
Batter (amps)	1000
Staircases	4
Number of berths	8
Main Engine	Alco 12V 210E 2,400 HP
Propulsion	9' 0" dia propeller, Type 17 Kort Nozzle, Flushing Rudder
Reduction Gear	Rollipon W672619 ratio 4.90:1
Bulker Pumps	
Generators	(2) Diesel 6-75 with Marulda Generators 200V, 1PH, 1.0KVA
Interconnection & Network Imp/Prge	
Major Electronics	77 Tricon Radar Sperry AP & Gyro 2 Independent Nav Computers 1 x AIS, 2 x GPS, 1 x Plotter/Track 2 Displays 1 XDR Radar 1 Bidirectional Plotter Satellite email