



Nanni N13 - 660HP Marine Engine

PRODUCT DESCRIPTION

New Marine Engine with 660HP @ 2100Rpm

(Rating M4)

Engine is coupled to a gearbox:

Dong-I, DMT260, Ratio of 2.92:1.

RATINGS

„ Up to 3000 annual operating hours

„ Load factor up to 40%

„ Full power for no more than 1 hour

out of each 12 hours of operation. The

remaining operation time must be at or

below cruising speed

Categories: [Marine Engines](#)

Cooling Method Heat Exchanger

Engine Model Nanni N13

HP 660

RPM 2100

Condition New

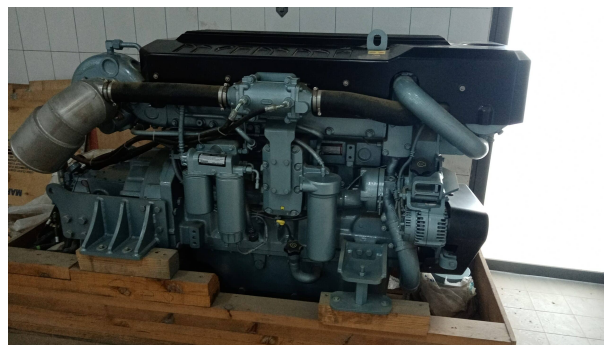
Additional Information

Emission compliance

IMO Marpol Annex VI

NRMM (97/68/EC) Tier 3

EPA marine Tier 3





RCD2 2013/53/EU

