



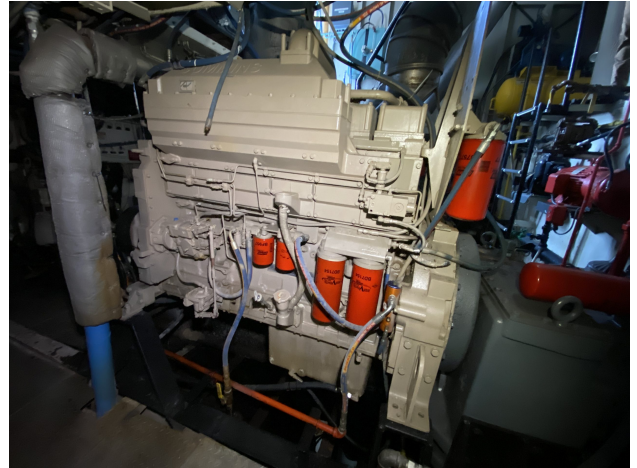
Pair Cummins KTA19 M3 Marine Engines - RTO

PRODUCT DESCRIPTION

600 hp @ 1800 RPM

CPL - 4150

Good condition units being removed from Tug



Gears also available:

Twin Disc 5222 Marine Gears

Ratio 6:1



Categories: [Marine Engines](#)

Cooling Method Keel Cooled

Engine Manufacturer/Brand Cummins

Engine Model KTA19 M3

HP 600

RPM 1800

Hours on Equipment -3

Condition Used

