



Pair MTU 16V2000 DDEC Marine Propulsion Engines 1,800HP



PRODUCT DESCRIPTION

1,800HP @ 2,350HP

Being pulled to go from DDEC to MDEC

Approximately 5,000 hours on rebuild, rebuild done by reputable shops

Gears are ZF 3050 1.75:1 ratio

Been in a passenger ferry 2016 till September 2023. 6 day trip without any issues prior to pulling. Pictures taken in the engine room day before pulling.

Engines and/or gears only. No harness nor panels.

Categories: [Marine Engines](#), [Marine Gears](#)

Engine Manufacturer/Brand MTU

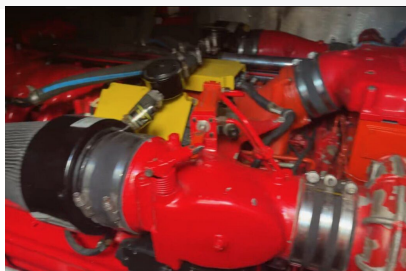
Engine Model 16v2000

HP 1800

RPM 2351

Hours on Equipment 5000

Gear Condition Running Take Out - RTO



COMMERCIAL
— MARINE PRO —