

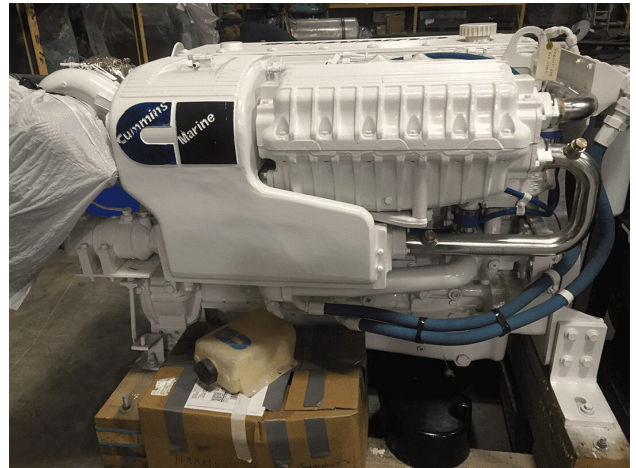


REBUILT Cummins QSM11 Marine Engine

PRODUCT DESCRIPTION

Rebuilt unit by shop. Torn down to bare block. moving components changed. Cam bearings replaced. Injectors were good, reused. Head reworked. non digital gauge panel. harness. All Cummins parts. Sold As Is, zero hours since rebuild. No warranty.

reported it was sold new in 2001. Have kept it on their shelf in an insulated warehouse since the rebuild several years ago as a swing unit. Parts warranty has expired.



Categories: [Marine Engines](#)

Cooling Method Heat Exchanger

Engine Manufacturer/Brand Cummins

Engine Model QSM11

HP 610

Condition Rebuilt

Additional Information cold start video available. sold new in 2001. rebuilt from the bare block several years ago. Stored in insulated warehouse. Parts warranty has expired. No core return.
