



Single Crusader CXLA 270HP--LH rotation - Low hour

PRODUCT DESCRIPTION

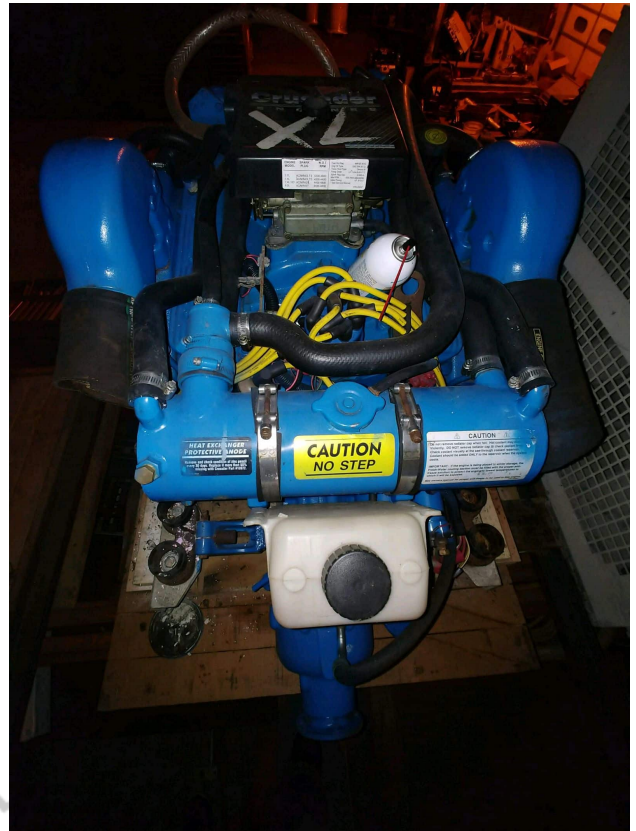
Came out of 28' Aquasport. Said to have 160hs on meter when pulled. Said to have started easily and ran perfectly. Very clean RTO. Carbonated . Borg Werner gears 1.5:1---straight. LH or standard rotation.

Categories: [Marine Engines](#)

Engine Model CXLA

HP 270

Condition RTO



COMMERCIAL
— MARINE PRO —

