

Bill of Material

Feature Code	Description	Qty
C2000D6E C2000 D6E L170-2 L090-2 L224-2 A331-2 R184-2 R002-2 E171-2 E169-2 L050-2 H536-2 KR78-2 BE10-2 B280-2 A293-2 H609-2 H704-2 H606-2 H720-2 KA08-2 H678-2 K020-2 KS53-2 KX24-2 KP78-2 0430 0431 0450 0440 A333-2 H756-2 H545-2 H389-2 H527-2 E166-2 D041-2 DC02-2 H607-2 H734-2 A334-2 C333-2 L010-2 L026-2 L189-2 A358-2 C278-2	C2000D6E, Diesel Genset, 60Hz, 2000kW C2000D6E, Diesel Genset, 60Hz, 2000kW EPA, Tier 2, NSPS CI Stationary Emergency Emissions Certification Listing - UL 2200 IBC Seismic Certification Duty Rating - Standby Power (ESP) Low Voltage 277/480V 3 Phase, Wye, 4 Wire Ambient Temperature (50C/122F) 240VAC Literature - English Display Language - English Output Terminals - NEMA 2 Hole Lug 105C Temperature Rise Alternator - 60Hz, Wye, 480V, 105C Standby Alternator Heater, 240 Volt AC Control Mounting - Left Facing PowerCommand 3.3 Controller, Paralleling Capable Analog Meters - AC Output AmpSentry™ UL Listed Protective Relay Alarm - Audible, Engine Shutdown LCD Control Display Display, Running Time Signals - Aux, Input/Output Relays - User Configured Circuit Breaker or Entrance Box - None CB single breaker type_None CB dual breaker type_None Circuit Breaker - None - Right Circuit Breaker or Entrance Box - None - Left Battery Charging Alternator Water in Fuel (WIF) sensor Low fuel pressure sensor Shutdown - Low Coolant Level Warning - Low Coolant Level Temperature independent coolant heater (208/240) Engine Air Cleaner - Normal Duty Air cleaner restriction indicator (Mechanical) Engine Oil Filters, Full Flow with Bypass Oil Sampling Valve Engine Starter - 24 Volt DC Motor Fuel Hoses Test Record - Strip Chart Test Record - Cummins Certified Standby 5 Year 2500 Hour - Parts + Labor + Travel Packing - None Engine Fuel Filters - Duplex	
0300-5929-02	Annunciator-Panel Mounted With Enclosure (RS485)	40

Enclosure	75dB(A) @ 23ft Sound Enclosure	40
Fuel tank	3400 Gallon UL142 Subbase Fuel Tank - 24 Hours	40
Circuit breaker	Freestanding Breaker, 100% Rated, LSI Trip, Camlocks for Temp Genset/Load Bank Connection	40
Muffler & exhaust part	Internally Mounted Critical Muffler and Exhaust	40
Miscellaneous	A067X909 - Teknic Remote E-stop Kit	40
Platform	Service Platforms Down Each Side of the Generator	40

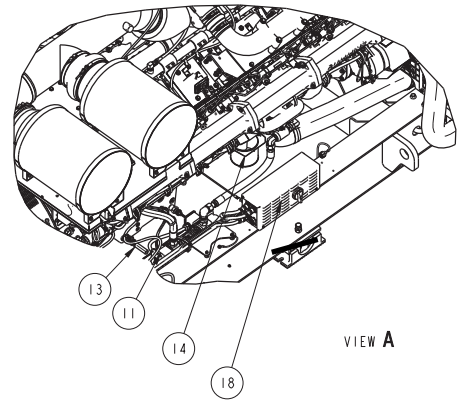
A059J208	PowerCommand Gateway, Protonode, PCCnet	40
----------	---	----

Miscellaneous	SuperTorque 8Z Battery System	40
Miscellaneous	Enclosure Electrical Package - 150A Load Center, Interior AC Lights, Exterior AC Lights, 5kW Space Heaters	40
A071W659	ISOLATOR,VIBRATION	560

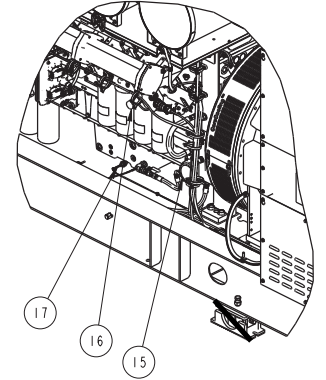
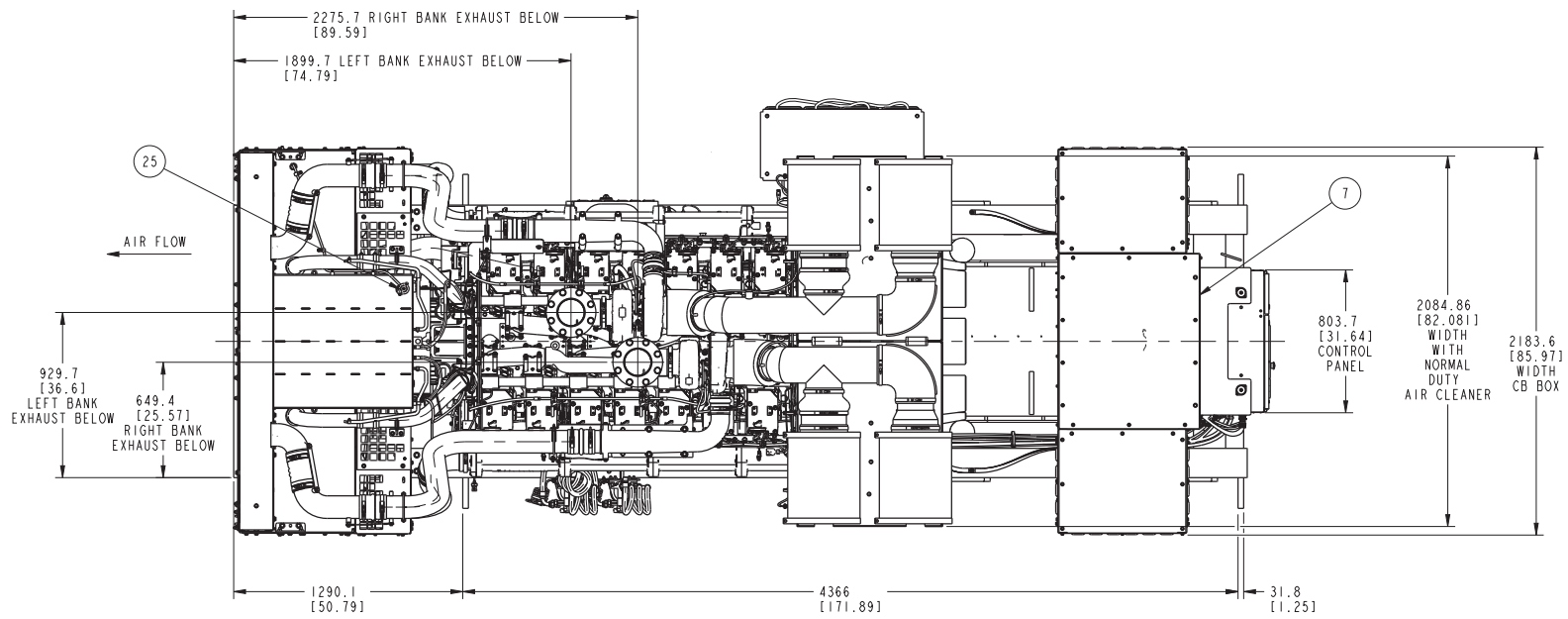
NOTES:

Project Notes & Clarifications:

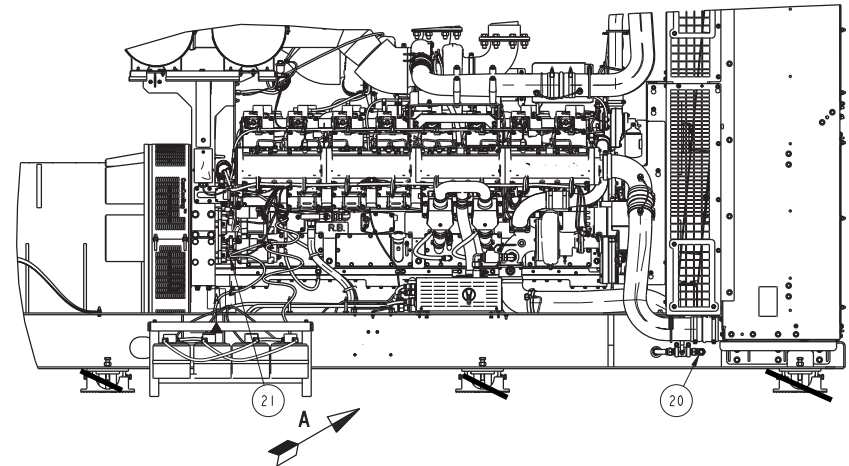
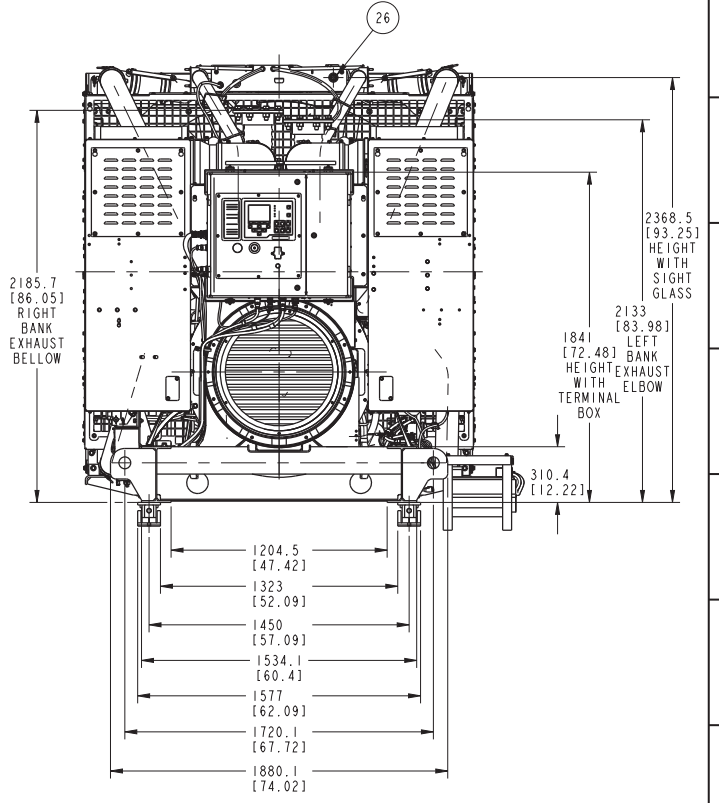
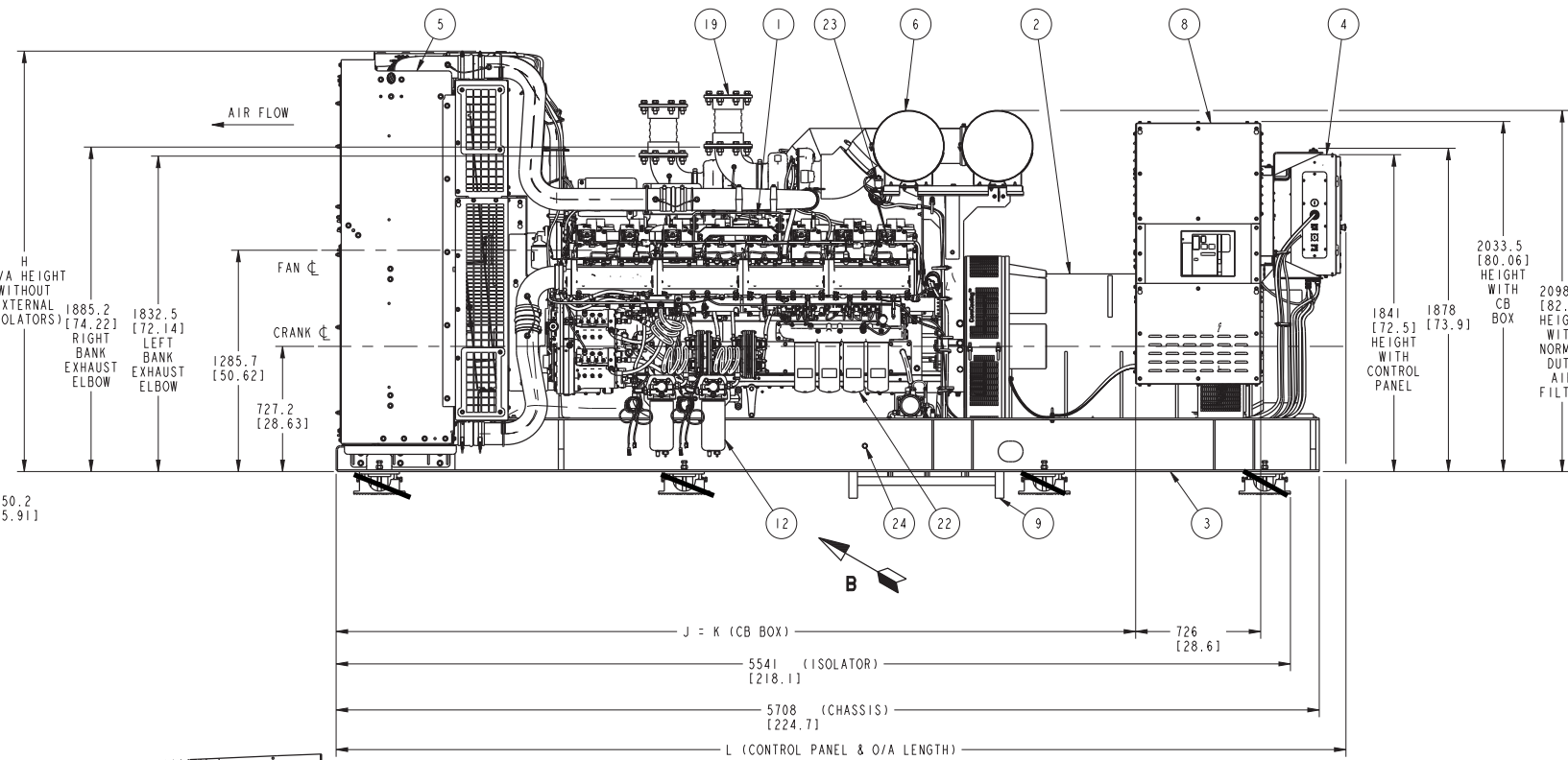
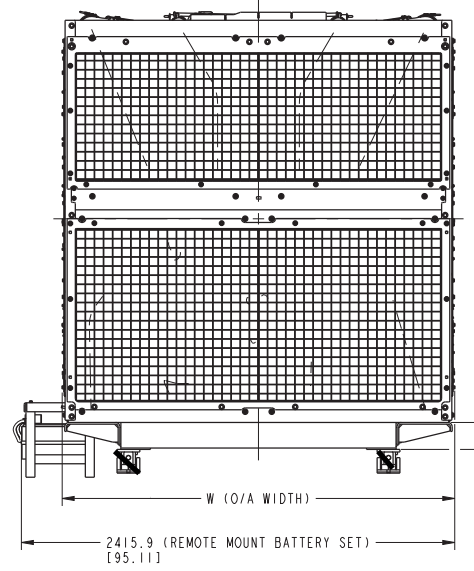
- All ship loose items installed by others.
- Unloading, installation, and fuel are not included and will be the responsibility of others.
- **Warranty:** Cummins warranty begins at the successful completion of startup and testing in lieu of acceptance or substantial completion.
- **Startup & Training:**
 - Providing Cummins standard startup and the specific testing listed above only. All other testing including NETA testing is provided by others.
 - Training for maintenance personnel will be concurrent at time of startup unless otherwise noted.
 - No videotaping is included with this quotation. All taping is supplied by others.
- **PMA:** Generator Maintenance Agreement is not included and will be negotiated directly with the owner once equipment has been successfully started up and tested.



VIEW A



VIEW B



LEFT HAND SIDE GENSET VIEW

ALTERNATOR	J	K	L (UP TO CONTROL PANEL)
S7 C CORE	4356	4356	5578
S7 D CORE	4476	4476	5698
S7 E CORE	4476	4476	5698
S7 F CORE	4476	4476	5698
S7 G CORE	4556	4556	5778
S7 H CORE	4677	4677	5898
S7 J CORE	4642	4642	5863

1	20	COOLANT DRAIN
2	19	EXHAUST BELLOWS
1	18	HEATER CONTROL BOX
1	17	OIL HEATER
1	16	OIL SAMPLING VALVE
1	15	ENGINE LUBE OIL LEVEL MAINTAINER
1	14	OIL DRIP CAN
1	13	OIL DRAIN VALVE
2	12	FUEL WATER SEPERATOR
1	11	COOLANT HEATER
4	10	REDUNDANT STARTER BATTERY/TRAY OPTION (REMOTE MOUNT)
4	9	STANDARD STARTER BATTERY/TRAY OPTION (REMOTE MOUNT)
1	8	CIRCUIT BREAKER BOX
1	7	TERMINAL BOX
1	6	AIR FILTER
1	5	COOLING SYSTEM
1	4	CONTROL PANEL
1	3	CHASSIS-HARD MOUNT
4	22	LUBE OIL FILTER
1	21	STARTER MOTOR
1	2	ENGINE OSK50-G24/G25
QTY	FIND NO.	DESCRIPTION

1	20	COOLANT DRAIN
2	19	EXHAUST BELLOWS
1	18	HEATER CONTROL BOX
1	17	OIL HEATER
1	16	OIL SAMPLING VALVE
1	15	ENGINE LUBE OIL LEVEL MAINTAINER
1	14	OIL DRIP CAN
1	13	OIL DRAIN VALVE
2	12	FUEL WATER SEPERATOR
1	11	COOLANT HEATER
4	10	REDUNDANT STARTER BATTERY/TRAY OPTION (REMOTE MOUNT)
4	9	STANDARD STARTER BATTERY/TRAY OPTION (REMOTE MOUNT)
1	8	CIRCUIT BREAKER BOX
1	7	TERMINAL BOX
1	6	AIR FILTER
1	5	COOLING SYSTEM
1	4	CONTROL PANEL
1	3	CHASSIS-HARD MOUNT
4	22	LUBE OIL FILTER
1	21	STARTER MOTOR
1	2	ENGINE OSK50-G24/G25
QTY	FIND NO.	DESCRIPTION

NOTE: THE AMOUNT OF VIBRATION ISOLATORS ON THIS GENERATOR DUE TO IT BEING SEISMICALLY RATED WILL BE 14.

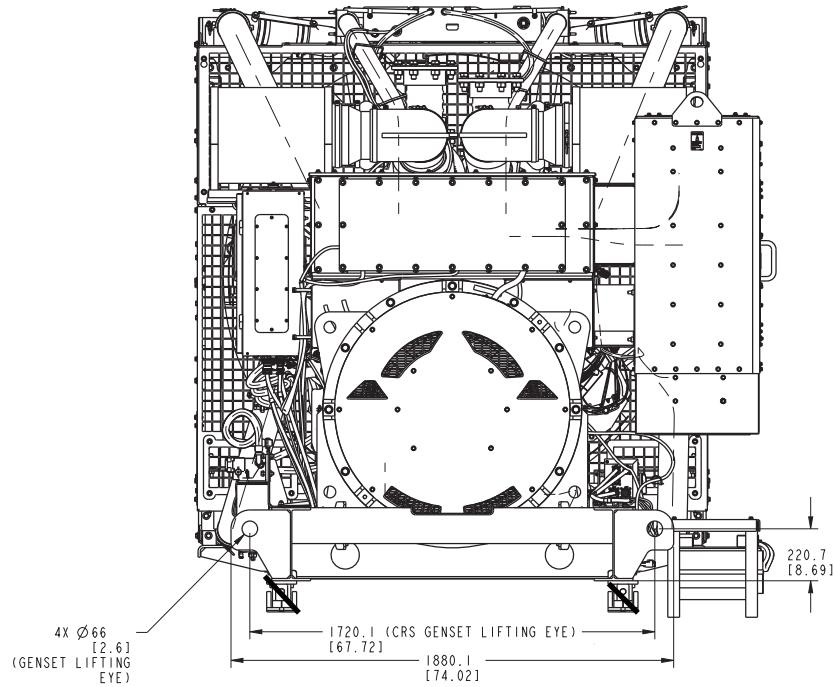
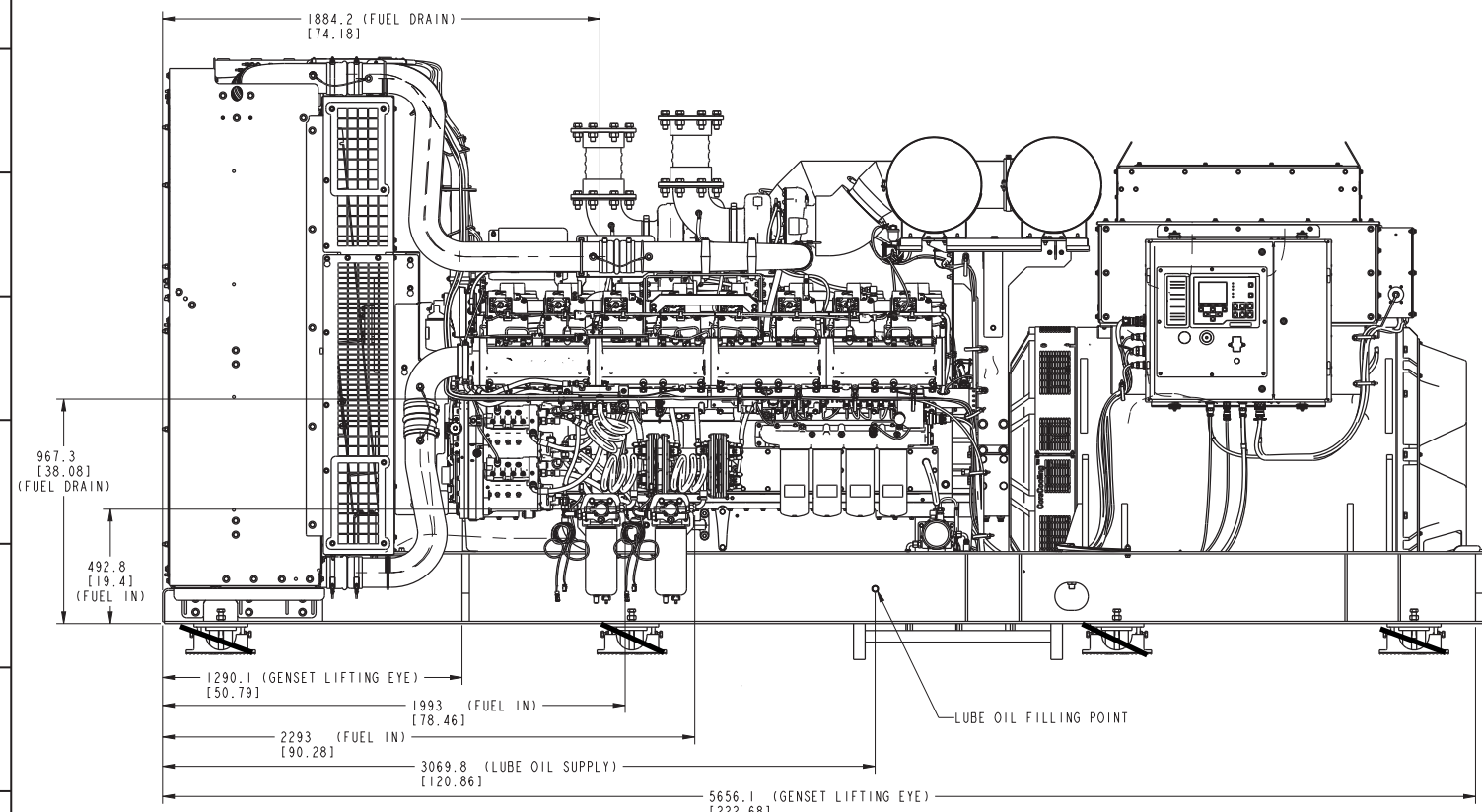
PART NUMBER: A060C089 | PART REVISION: D
 PART NAME: OUTLINE GENSET
 DRAWING CATEGORY: DETAIL
 STATE: RELEASED
 SHEET: 3 OF 10
 CUMMINS DATA CLASSIFICATION: CUMMINS CONFIDENTIAL
 THIS DOCUMENT (AND THE INFORMATION SHOWN THEREON) IS CONFIDENTIAL AND PROPRIETARY AND SHALL NOT BE DISCLOSED TO OTHERS IN HARD COPY OR ELECTRONIC FORM, REPRODUCED BY ANY MEANS, OR USED FOR ANY PURPOSE, WITHOUT WRITTEN CONSENT OF CUMMINS INC.

LAST DATUM LETTER USED: -	LAST REFERENCE LETTER USED: E
MODEL/PLATFORM: OSK50	THIS PART IS SIMILAR TO: -
UNLESS OTHERWISE SPECIFIED THE FOLLOWING SHALL APPLY	
SURFACE FINISH PER: -	SURFACE FINISH: -
WALL THICKNESS: -	EDGE RADIUS: -
DIMENSIONAL TOLERANCES: -	FILLET RADIUS: -
HOLE SIZE 0.00-4.99	HOLE SIZE 5.00-9.99
TOL. +0.15/-0.08	TOL. +0.20/-0.10
	HOLE SIZE 10.00-17.49
	TOL. +0.25/-0.13
	HOLE SIZE 17.50-24.99
	TOL. +0.30/-0.13

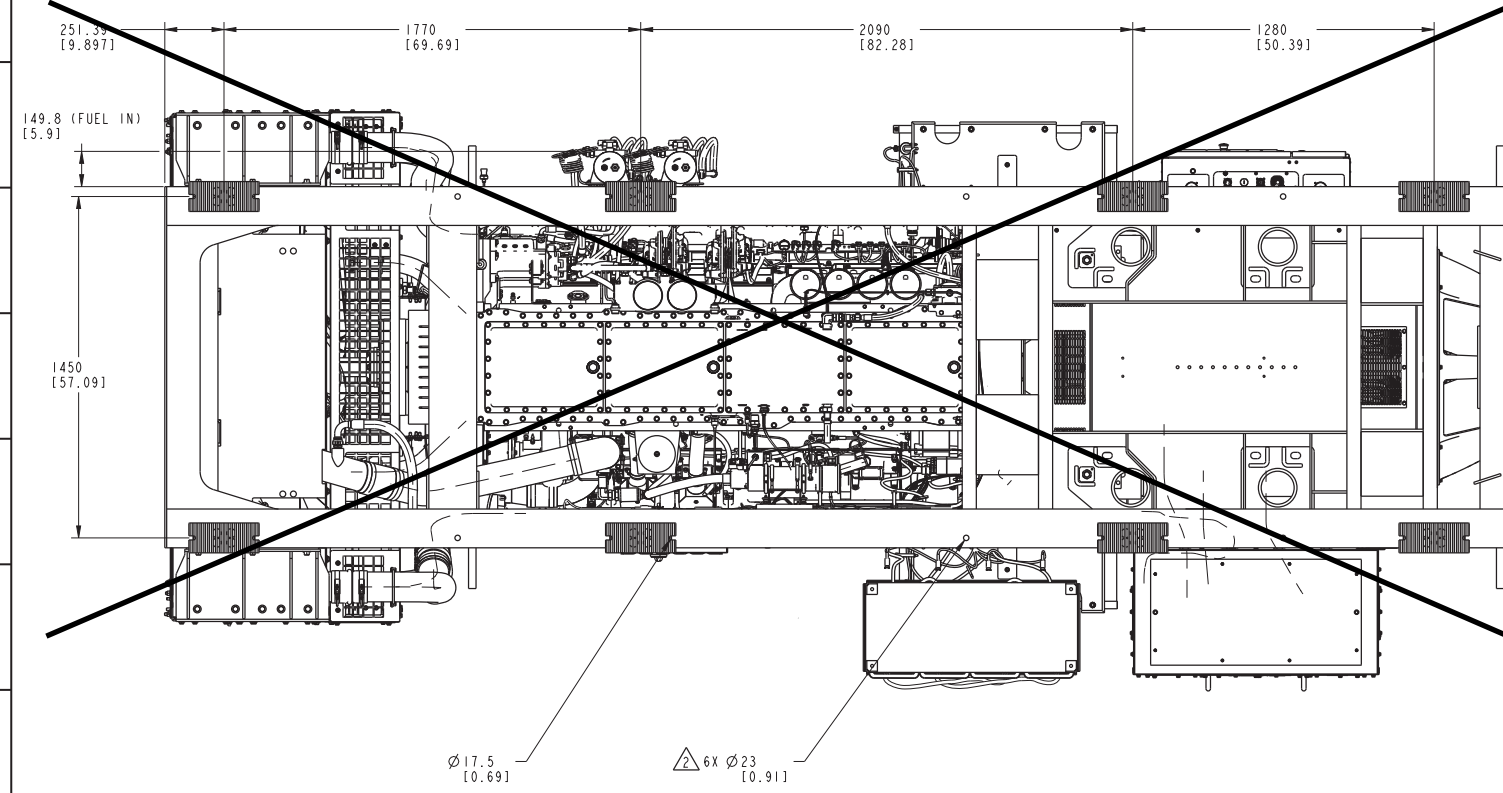
Cummins Inc.
 DIMENSIONS ARE IN: MILLIMETERS
 () ARE IN: INCHES
 DIMENSIONING AND TOLERANCING PER: ASME Y14.5-2009
 THIRD ANGLE PROJECTION
 CAD SYSTEM: PTC® Creo® Parametric

FUEL SUPPLY, LIFTING LUG, OIL MAINTAINER AND S7, S9 NON-SEISMIC ISOLATOR INSTALLATION DETAIL

NOTES:
 REFER TO GENSET INSTALLATION DRAWING A065D207-INSTALLATION, GENSET SEISMIC ISOLATOR AND A065D206-INSTALLATION, GENSET NON SEISMIC INSTALLATION DETAILS



SCALE 3/32

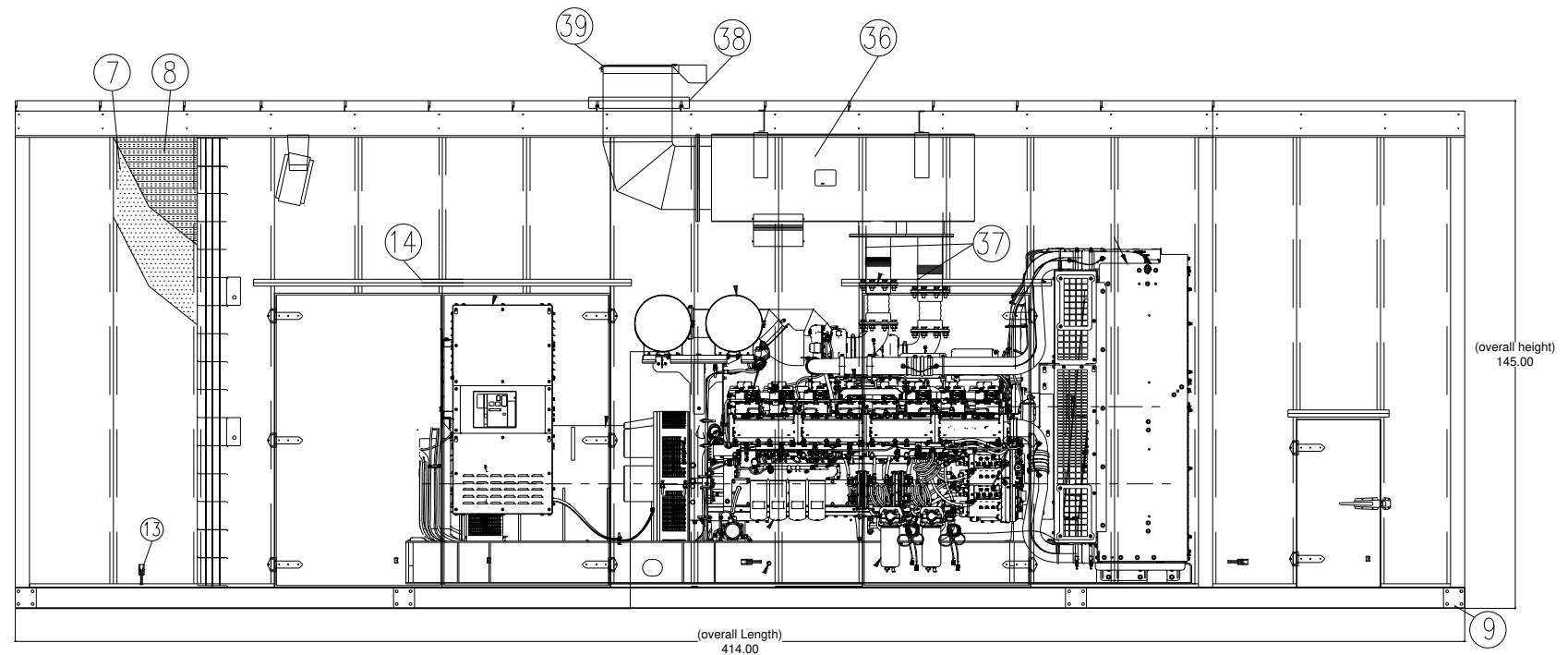


DESCRIPTION	ON FILTER	HOSE	
		FILTER SIDE	CUSTOMER SIDE
FUEL IN	1-1/16-12 UN JIC SWIVEL 37° FLARE	1-1/16-12 90° ELBOW JIC SWIVEL 37°	3/4 NPTF MALE PIPE

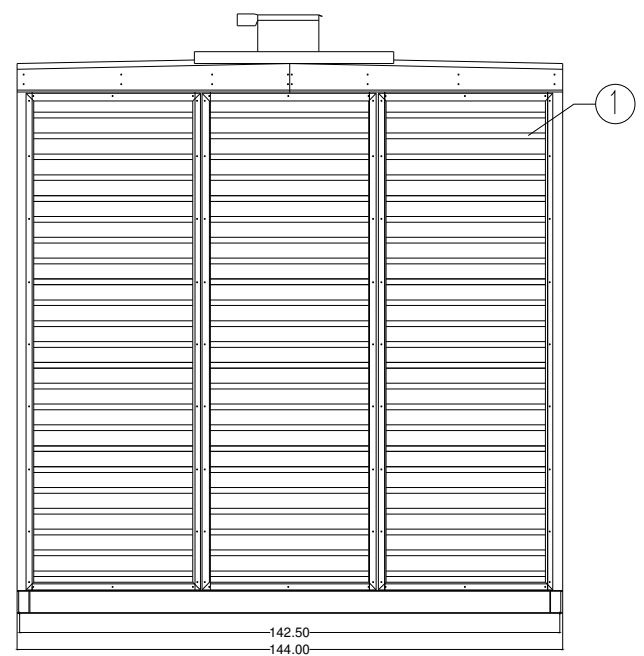
DESCRIPTION	ON ENGINE	HOSE	
		ENGINE SIDE	CUSTOMER SIDE
FUEL DRAIN	1-1/16-12 UN-2A 37° FLARE	1-1/16-12 STRAIGHT JIC SWIVEL FEMALE 37° FLARE	3/4 NPTF MALE PIPE

OIL MAINTAINER SYSTEM CONNECTOR DETAILS	
LUBE OIL SUPPLY	3/4" (THREAD) JIC 37° (SAE J514)

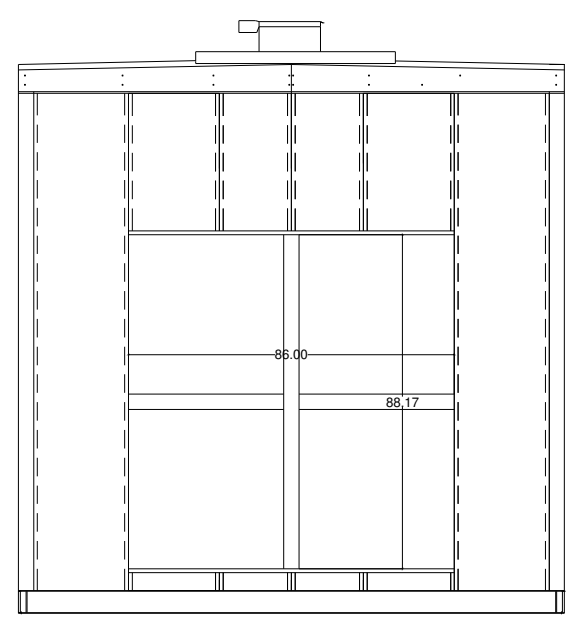
PART NUMBER: A060C089	PART REVISION: D
PART NAME: OUTLINE GENSET	
DRAWING CATEGORY: DETAIL	
STATE: RELEASED	SHEET: 5 OF 10
CUMMINS DATA CLASSIFICATION: CUMMINS CONFIDENTIAL	
THIS DOCUMENT (AND THE INFORMATION SHOWN THEREON) IS CONFIDENTIAL AND PROPRIETARY AND SHALL NOT BE DISCLOSED TO OTHERS IN HARD COPY OR ELECTRONIC FORM, REPRODUCED BY ANY MEANS, OR USED FOR ANY PURPOSE WITHOUT WRITTEN CONSENT OF CUMMINS INC.	
DIMENSIONS ARE IN: MILLIMETERS () ARE IN: INCHES	
DIMENSIONING AND TOLERANCING PER: ASME Y14.5-2009	
THIRD ANGLE PROJECTION	
CAD SYSTEM: PTC® Creo® Parametric	



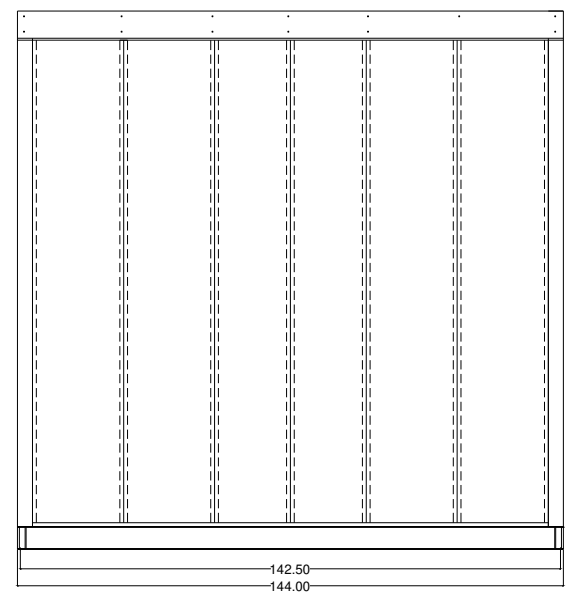
ENCLOSURE TOP VIEW



INTERMEDIATE WALL VIEW



INTERMEDIATE WALL VIEW



RADIATOR END VIEW

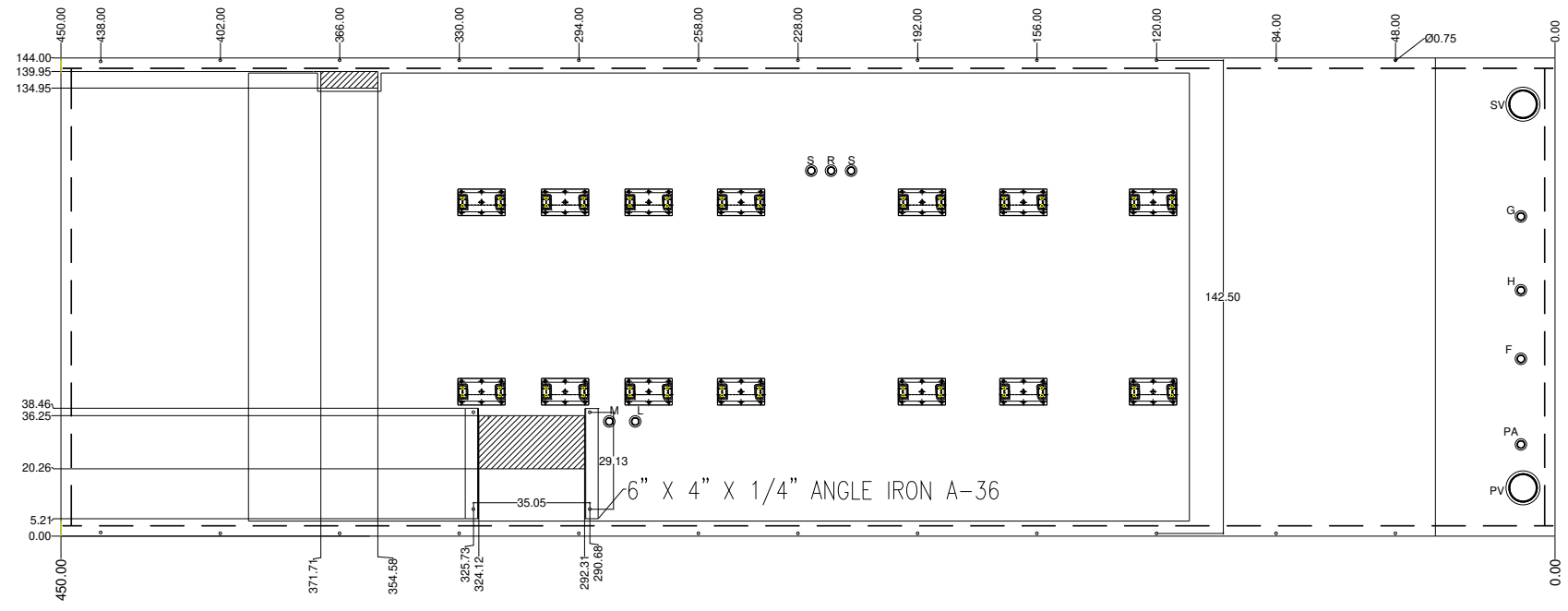
CUSTOMERS USE ONLY	
APPROVED FOR PRODUCTION:	
APPROVED WITH CHANGES:	
APPROVED BY:	
APPROVAL DATE:	
NOT APPROVED:	

UNLESS OTHERWISE SPECIFIED:	
DIMENSIONS ARE IN INCHES	
TOLERANCES:	
FRACTIONAL ± 1/8"	DRAWN
ANGULAR ± 3°	ENG APPR.
DECIMAL ± 0.125"	MFG APPR.
± INTERPRET PER ASME Y14.5-2009	D.A.
MATERIAL	COMMENTS:
FINISH	
DO NOT SCALE DRAWING	

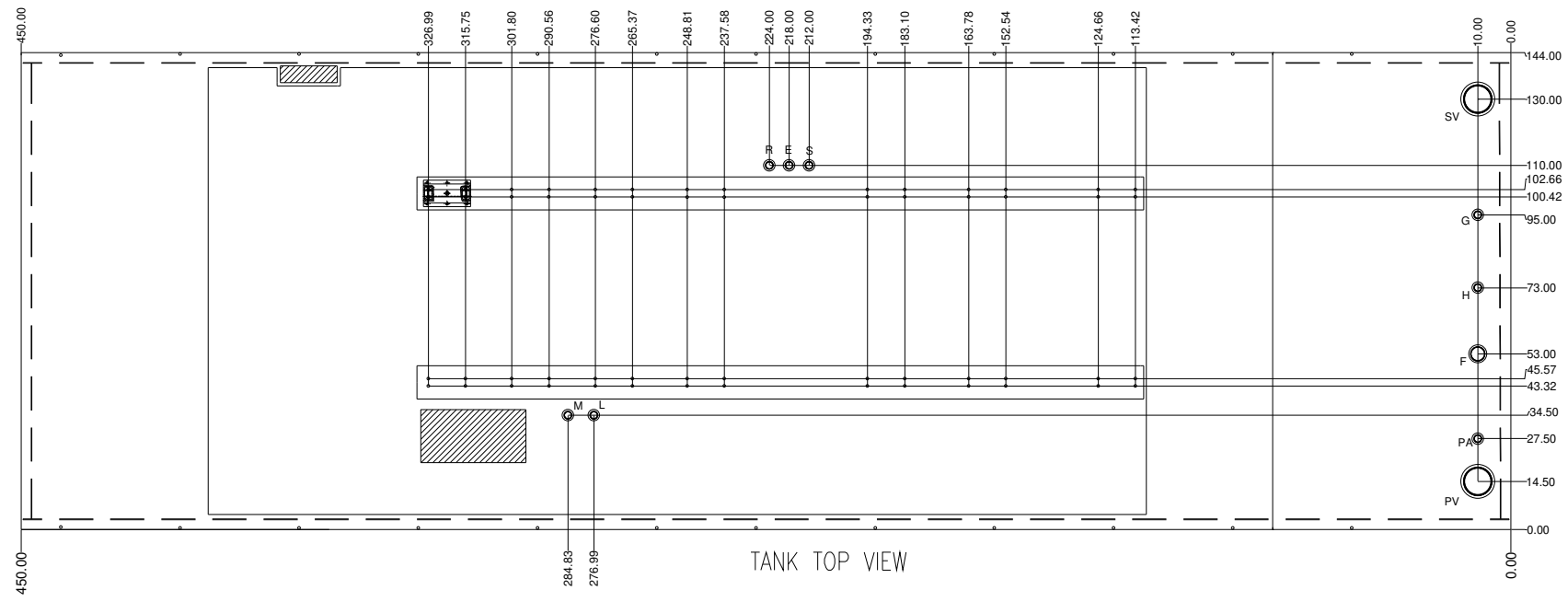
REVISIONS				
REV.	DESCRIPTION	DATE	BY	APPD BY

PROPRIETARY AND CONFIDENTIAL
 THE INFORMATION CONTAINED IN THIS DRAWING IS THE
 SOLE PROPERTY OF TOMBALL CONTROLS. ANY USE OR
 REPRODUCTION IN PART OR AS A WHOLE WITHOUT THE
 WRITTEN PERMISSION OF TOMBALL CONTROLS IS PROHIBITED.
 THIS WORK IS INTENDED SOLELY FOR THE PROJECT NAMED.

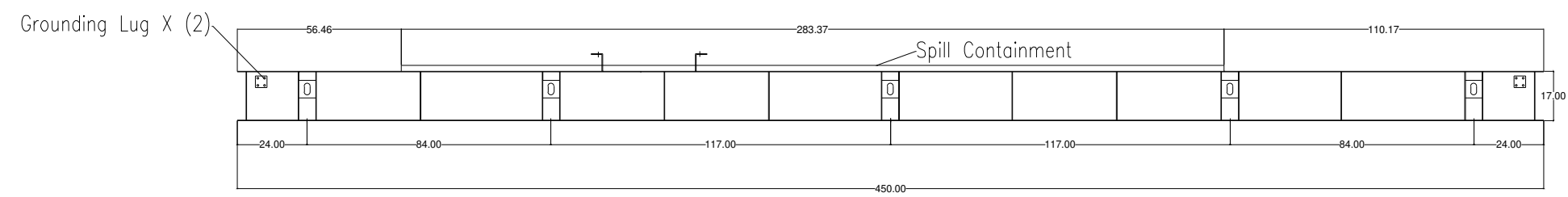
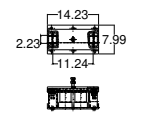
SIZE	DWG. NO.	REV
C	Enclosure View	B
SCALE: 1:1	WEIGHT: 23,000	SHEET 3 OF 7



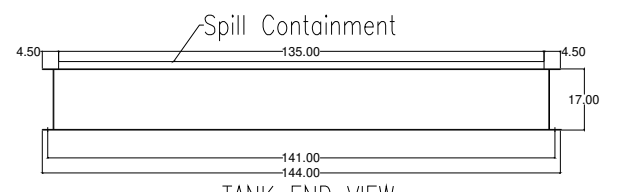
UL 142 Tank		
Usable Gallons: 3356 Total Gallons: 3625		
ITEM	SIZE	COMPONENT DESCRIPTION
PA	2"	Primary Atmospheric Vent
PV	8"	Primary Emergency Vent
SV	8"	Secondary Emergency Vent
S	2"	Fuel Supply Port
R	2"	Fuel Return Port
F	4"	Fuel Fill Port
H	2"	Fuel High Alarm Switch W/Visual and Audible Alarms
G	2"	Fuel Gauge Port
L	2"	Fuel Low Level Alarm Switch
M	2"	Fuel Monitoring Switch (Rupture Basin)
E	2"	Spare Port



TANK TOP VIEW



TANK SIDE VIEW



TANK END VIEW

CUSTOMERS USE ONLY		
APPROVED FOR PRODUCTION:		
APPROVED WITH CHANGES:		
APPROVED BY:		
APPROVAL DATE:		
NOT APPROVED:		

UNLESS OTHERWISE SPECIFIED:		NAME	DATE
DIMENSIONS ARE IN INCHES		DRAWN	
TOLERANCES:		ENG APPR.	
FRACTIONAL ± 1/8"		MFG APPR.	
ANGULAR ± 3°		D.A.	
DECIMAL ± 0.125"		COMMENTS:	
INTERPRET PER ASME Y14.5-2009			
MATERIAL			
FINISH			
DO NOT SCALE DRAWING			

PROPRIETARY AND CONFIDENTIAL
 THE INFORMATION CONTAINED IN THIS DRAWING IS THE
 SOLE PROPERTY OF TOMBALL CONTROLS. ANY USE OR
 REPRODUCTION IN PART OR AS A WHOLE WITHOUT THE
 WRITTEN PERMISSION OF TOMBALL CONTROLS IS PROHIBITED.
 THIS WORK IS INTENDED SOLELY FOR THE PROJECT NAMED.

SIZE	DWG. NO.	REV
C	Tank View	B